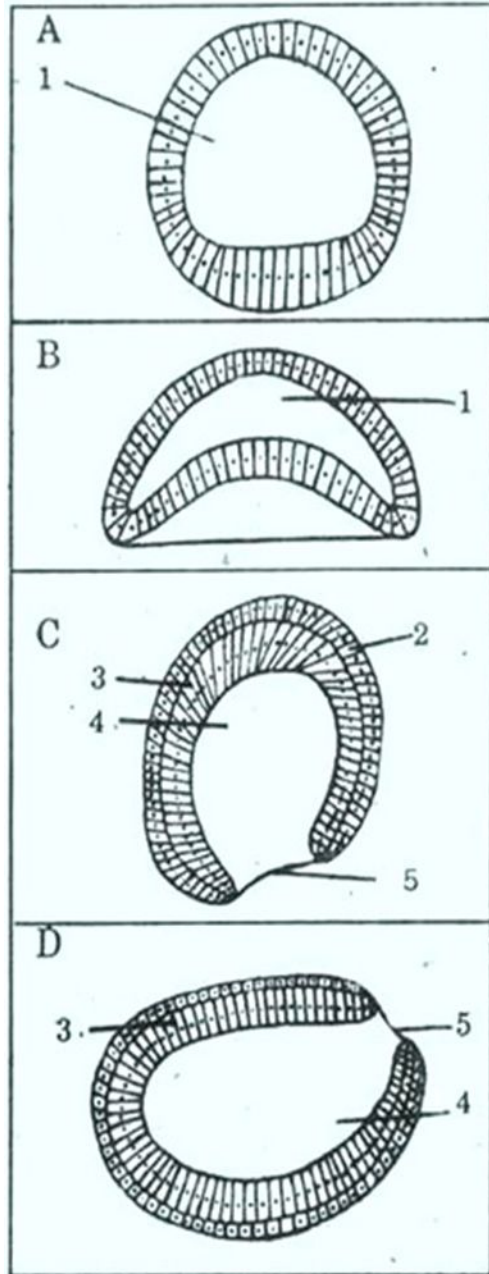


**GASTRULATION IN AMPHIOXUS,  
FROG AND CHICK**



A, B, C, D - Amphioxus  
-Gastrulation

A) Amphioxus - Blastula  
1) Blastocoel

B) Amphioxus - Invagination  
1) Blastocoel

C) & D) Amphioxus - Gastrula

2) Ectoderm

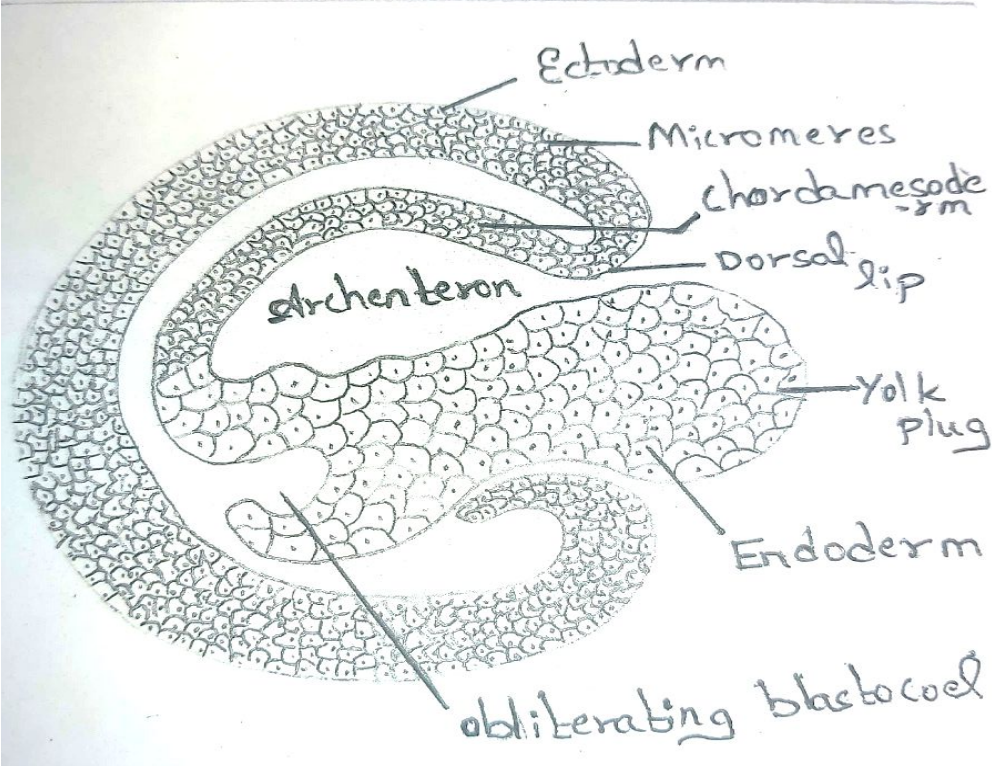
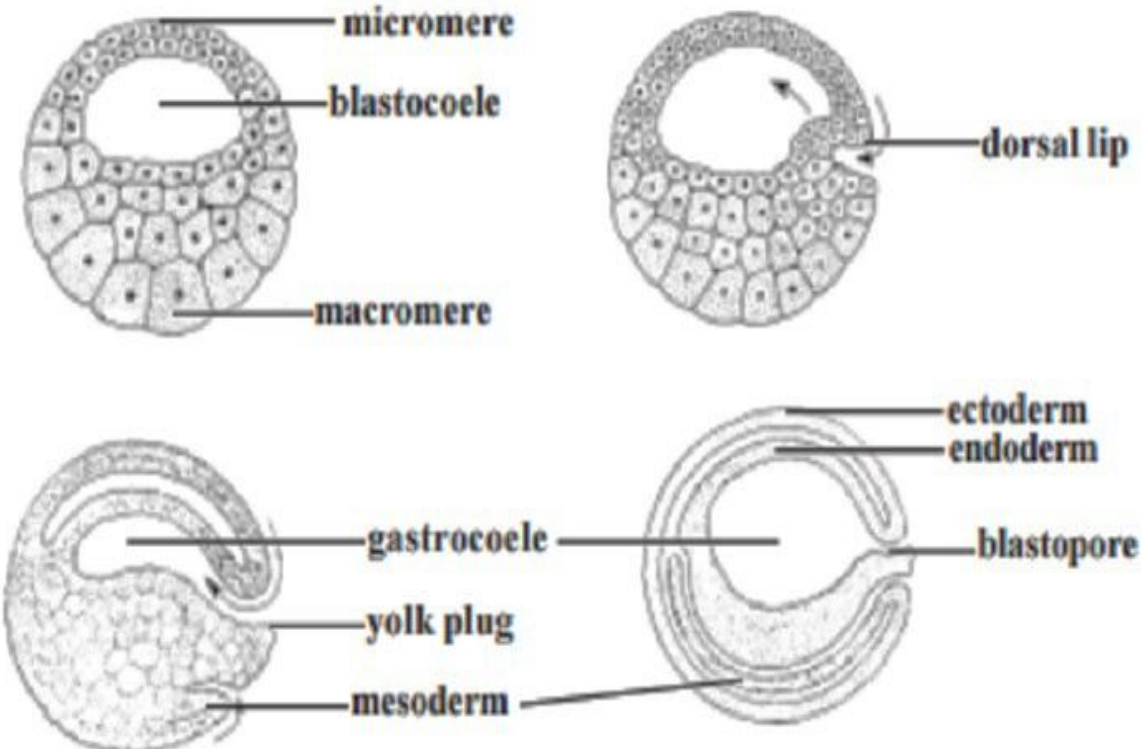
3) Endoderm

4) Archenteron

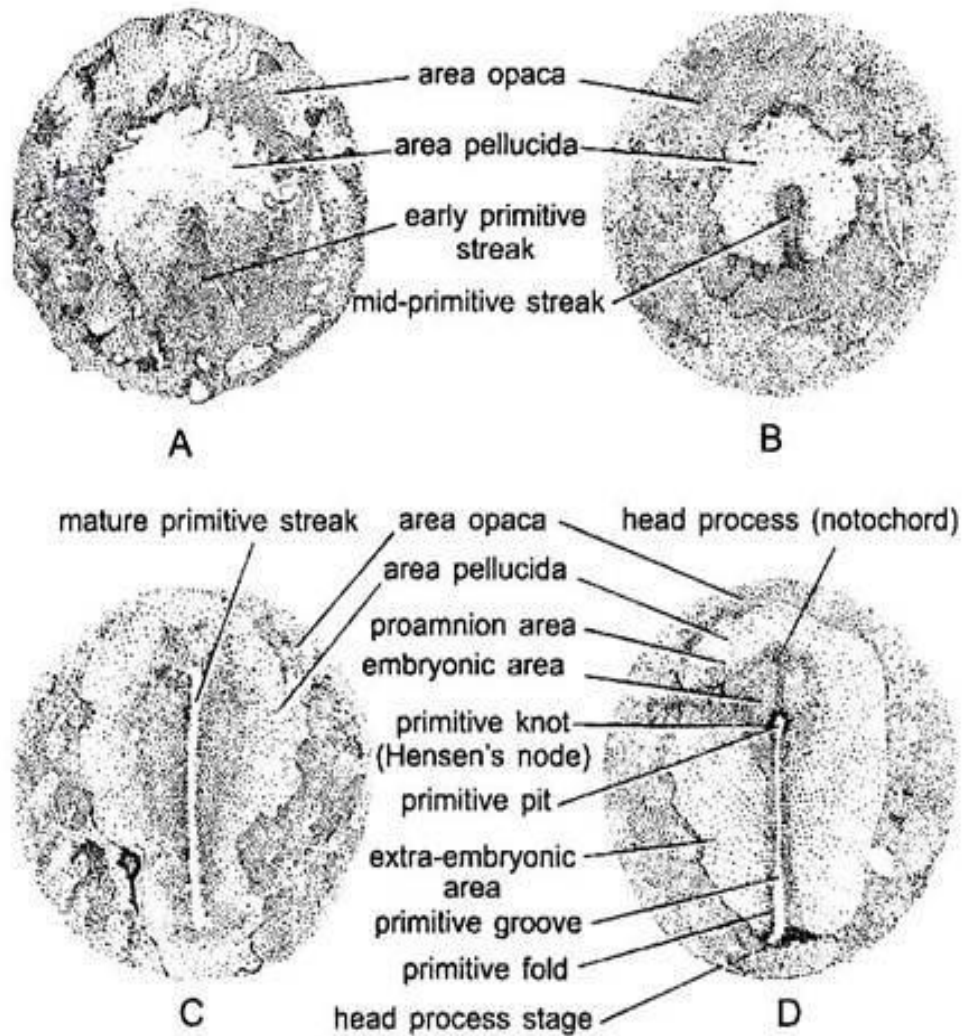
5) Blastopore

# GASTRULATION IN AMPHIOXUS

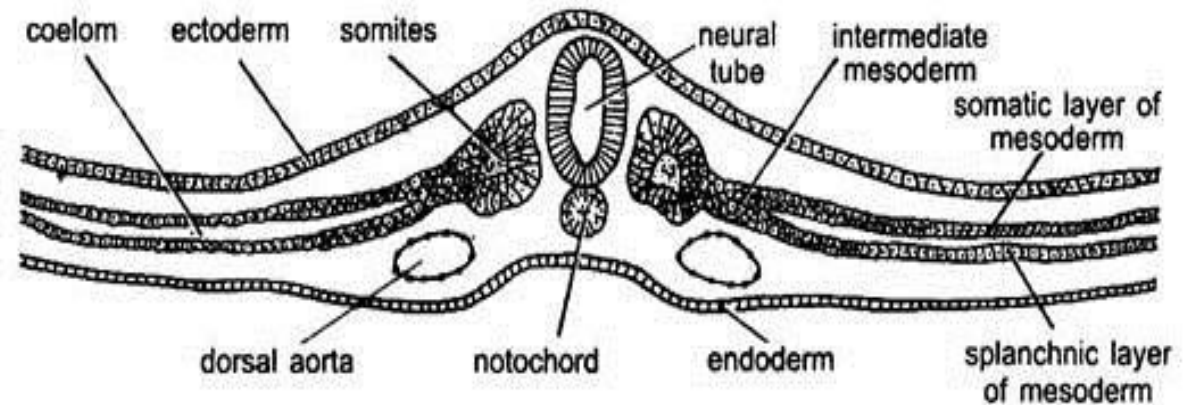
# GASTRULATION IN FROG



# GASTRULATION IN CHICK



**Fig. 38.5.** Surface view of chick blastoderm showing development of primitive streak (gastrulation) and head process (neurulation). A—Initial streak (stage 2); B—Intermediate streak (stage 3); C—Definitive streak (stage 4); D—Head process stage (stage 5 embryo of 19 to 22 hours of incubation).



**Fig. 38.7.** Cross section of an early chick embryo, illustrating the relationship of the germ layers.